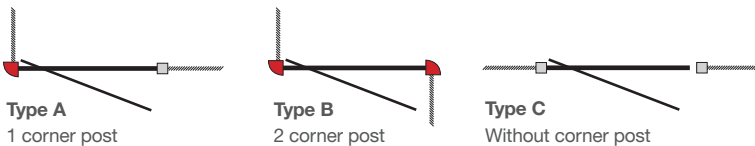
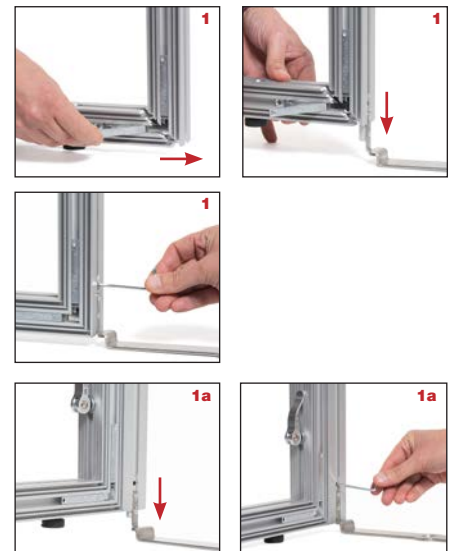
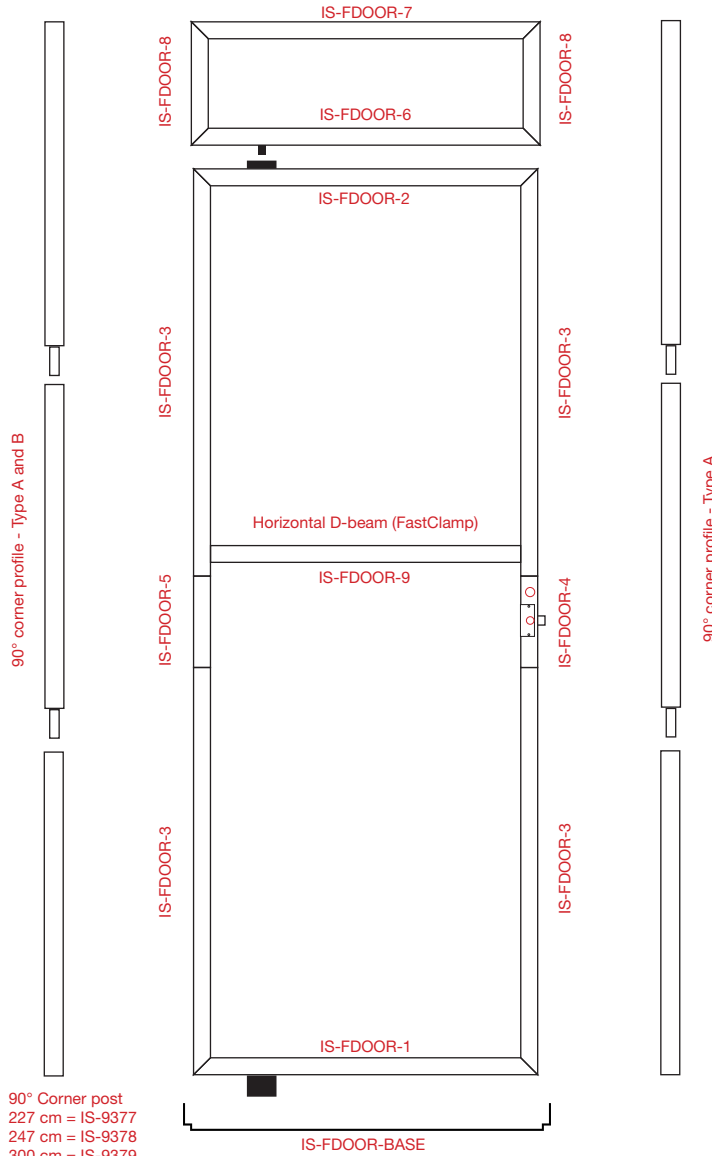


Fabric Door section - Straight

- IS-9460-A/B/C Door with top frame, total height 227 cm / 7.45 ft. (Midi)
- IS-9461-A/B/C Door with top frame, total height 247 cm / 8.10 ft. (Maxi)
- IS-9462-A/B/C Door with top frame, total height 300 cm / 9.85 ft.

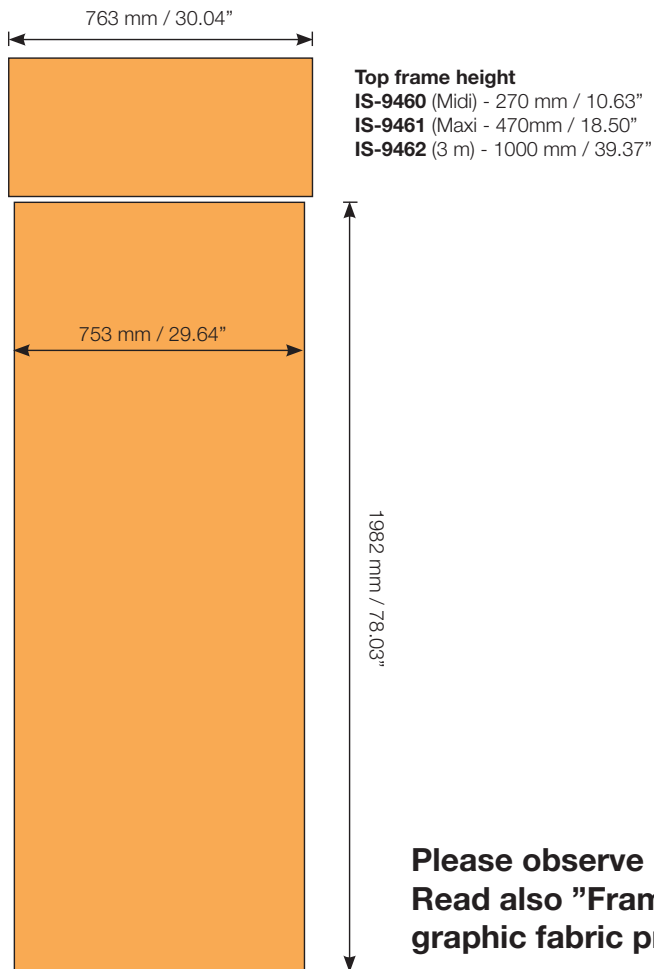


Stabilization kit
Item IS-9319



- 1** Start to open the two bottom clamps and slid out the side profile 10-15 mm, slide in the bottom plate at the profile of the frame in the side of the door (Type A and C), if you use a corner profile this is not necessary. Push down the bottom plate and lock with a allen key.
- 1a** If you have a Type A or B, attach the corner post at the side frames with the 4 Twist Lock (see reverse side), 1 in the base, 1 in the extension and 2 in the top profile. Side in the base plate from the bottom. Push down the bottom plate and lock with a allen key.
- 2** Mount the door, start with the bottom beam and connect the two side posts with the connectors. In the top of the two side posts attach the extension post with lock at the right side and the extension post without lock in the left side. After that mount two more side posts, end with the top beam and lock all connectors and mount the horizontal stabilisation beam.
- 3** Mount the fabric panel to the door, and make a 17 mm dia. over the key hole and a 5 mm dia. hole for the door handle connection. Attach the plate cover, small hole at top, attach the handle and fasten it with screws from the reverse side. The handle then serves to keep the plate tight to the graphic.
- 4** Build the top frame, short sections on the sides, beam with the small pin at the bottom of the frame.
- 5** Take the door and attach the small white foot at the hole in the bottom plate. After that mount the top frame over the door with the pin in the white plastic hub, lock the top frame with the two Twist Lock with the frames at the side of the door.
- 6** If your wall is not sufficiently stable, add an stabilisation kit (IS-9319).

Frame sizes



Twist Lock connector



1 Push the Twist Lock pin into and through the drilled hole.



2 Bring the second profile/frame into contact with the clamp pin. Holding the clamp handle perpendicular to the profile will provide proper pin alignment.



3 Twist the handle 90°



4 Bend the handle over and lock the clamp.

