

Brochure holder system

Uncut wires

IS-9313 Wire system **with** 4 meter (157.5") wires

Pre-cut wires

IS-9314 Wire system **for** 3000 mm (118.1") frame

IS-9315 Wire system **for** 2470 mm (97.2") frame

IS-9316 Wire system **for** 2270 mm (89.4") frame

IS-9317 Wire system **for** 2000 mm (78.7") frame

IS-9318 Brochure holders A4 / US letter
with 4 connectors



Mounting instruction



Hook the top connector of the wire assembly to the top beam.



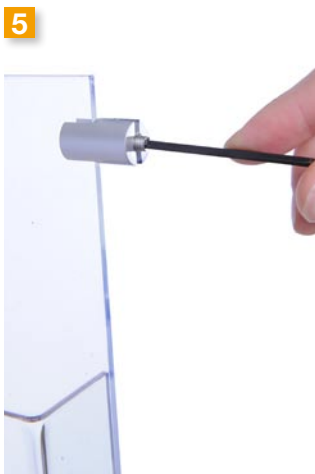
Mount the first bottom connector.



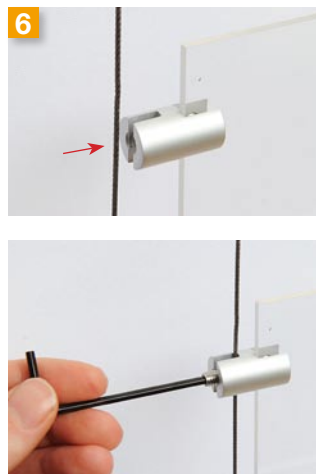
Screw the bottom fitting of the wire assembly into the connector until the wire is tight. Repeat the process with the top fitting.



Attach the four identical grip connectors to the brochure holder, evenly spaced. Do not overtighten.



Remove the side screws in all grip connectors.



Insert the wires into the grooves and reinstall the side screws.



You can now attach more brochure pockets.



Brochure holder system

Uncut wires

IS-9313 Wire system **with** 4 meter (157.5") wires

Pre-cut wires

IS-9314 Wire system **for** 3000 mm (118.1") frame

IS-9315 Wire system **for** 2470 mm (97.2") frame

IS-9316 Wire system **for** 2270 mm (89.4") frame

IS-9317 Wire system **for** 2000 mm (78.7") frame

IS-9318 Brochure holders A4 / US letter
with 4 connectors



1



Only for uncut wires

Adjust the bottom lock bracket and cut the wire to the desired length.

Cutting wire length

Frame height	Wire length
2000 mm (78.7")	1960 mm (77.1")
2270 mm (89.4")	2230 mm (87.8")
2470 mm (97.2")	2430 mm (95.6")
3000 mm (118.1")	2960 mm (116.5")
4000 mm (157.5")	3960 mm (155.9")

