

Rounded Showcase End module 400 mm

Extension Module

Item.no:

Midi IS-9432-1

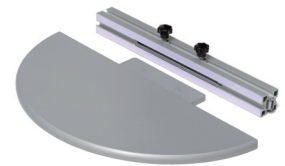
Maxi IS-9432-2

Complete with:

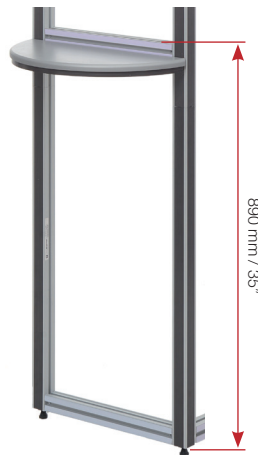
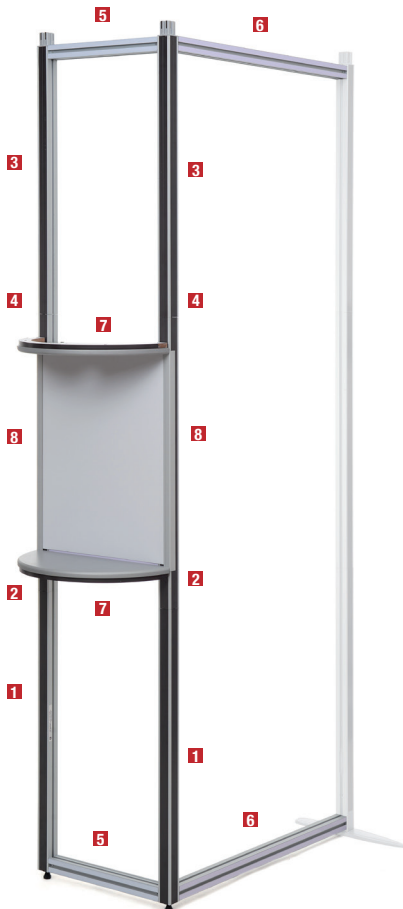
	Midi IS-9432-1	Maxi IS-9432-2
1	2 Base post, 750 mm, adjustable foot	IS-W750-EBM
2	2 Extension post, 750 mm	IS-0750-EEM
3	2 Top post, 755 mm	IS-0755-ETM
4	2 Extension post, 200 mm	IS-0200-EEM
5	2 Straight beam, 400	IS-400-BS
6	2 Straight beam, 800	IS-800-BS
7	2 Table shelf, 400	IS-9614
8	2 Corner trims, 565	IS-0565-CT
	1 Hanger (Special)	IS-706-HN
	1 Kicker & Hanger	IS-800-KHN



Accessories



Extra Floating Shelf, item IS-9616



2 Attach a table shelf so that the top of the horizontal beam is 890mm / 35" from the bottom of the post.



3 Mount the graphic panel inside the show case and push down the top table shelf to fit the graphic panel.

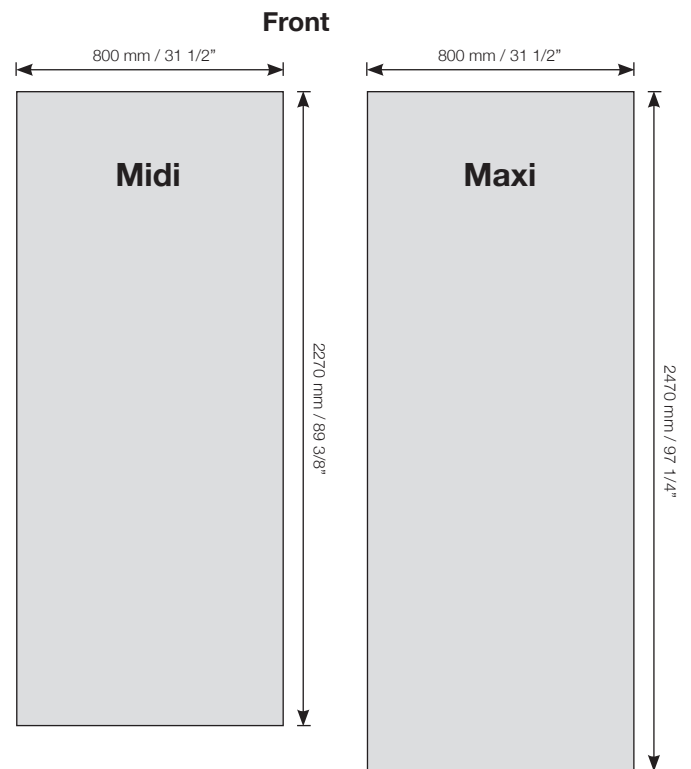
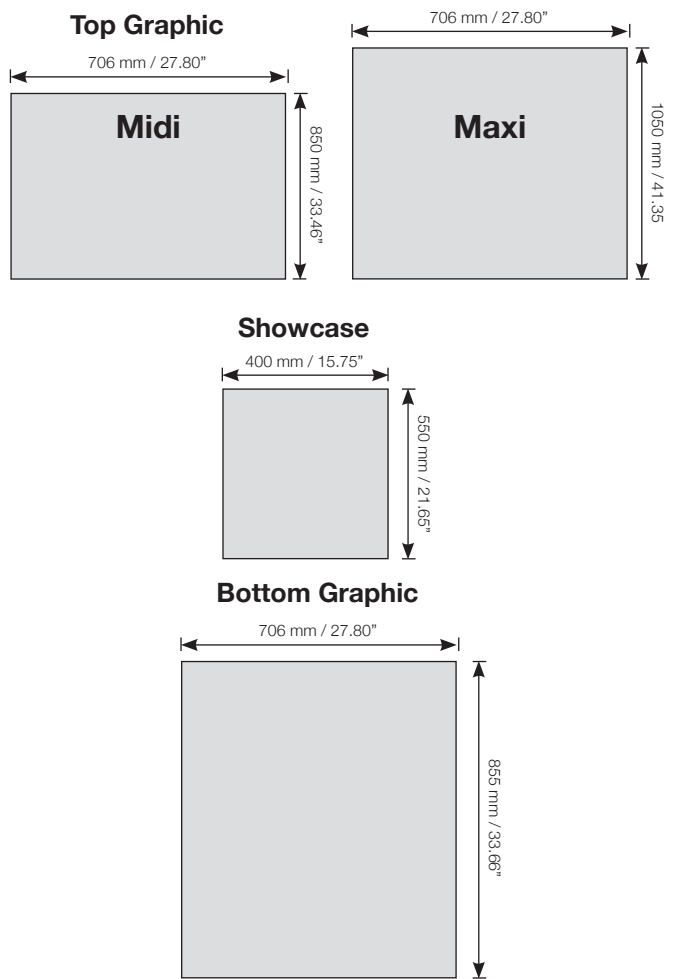


4 Attach the graphic panels and complete your module by installing corner trims along both edges between the table shelves.

1 Mount the corner posts (part no. 4 only for Maxi height). Mount 800 and 400mm beams at the top and bottom.

Please observe: You can place the shelves at different heights and make the opening as big as you wish, but then you must adjust the graphic dimensions and corner trims accordingly.

Graphic panel production



Graphic panel attachments

Accessories

Kickers & Hangers

(incl. for the first set of panels)

400 mm / 15.75"

Item IS-400-KHN

800 mm / 31.5"

Item IS-800-KHN

Magnetic tape (not incl.) 12 mm/0.5". Item 82281

Printer material

We recommended the following material:

Poster paper: 180 gr / 0.4 lb.

The printed graphic panels must be laminated before use.

Front side: 125 microns (0,125 mm) / 0.005"

Reverse side: 250 microns (0,250 mm) / 0.010" stop light"

Polyester film: 330-370 microns (0,350 mm) / 0.013-0.015"

Top laminate: 125 microns (0,125 mm) / 0.005"



Kicker



Hanger

Mounting of Kickers and Hangers

Kickers and hangers to be fixed at the bottom and at the top of the graphic panels (reverse side).

Mounting of Magnetic Tape

IMPORTANT Carefully mount the magnetic tape slightly inset from the edge of the graphic panel by approximately 0,25 mm / 0.010". Once mounted, a very thin straight white line should show between the edge of the graphic and the outside edge of the magnetic tape. Do not exceed 0,5 mm/0.020".

