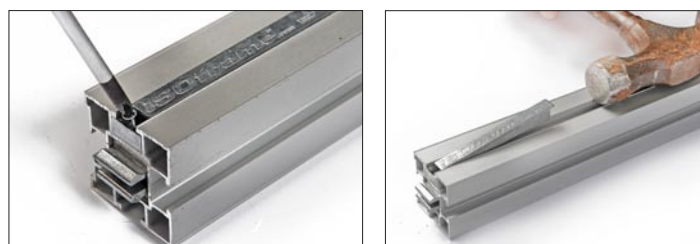
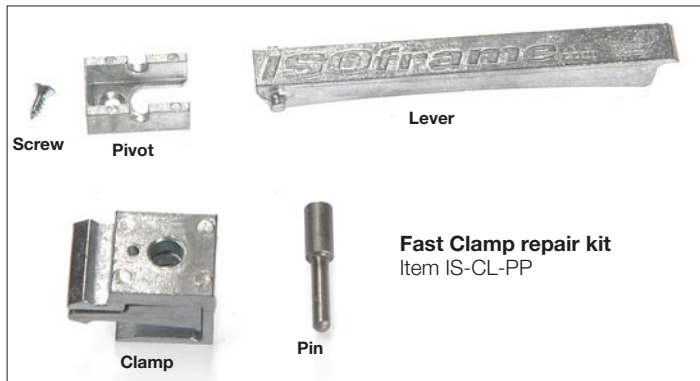


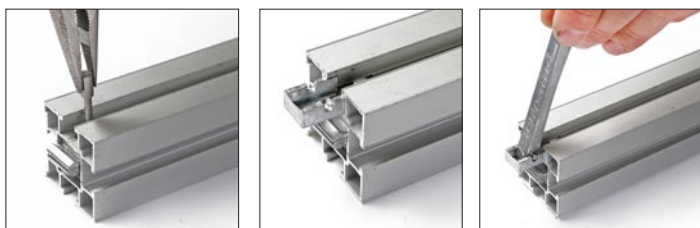
Replacement Fast-Clamp



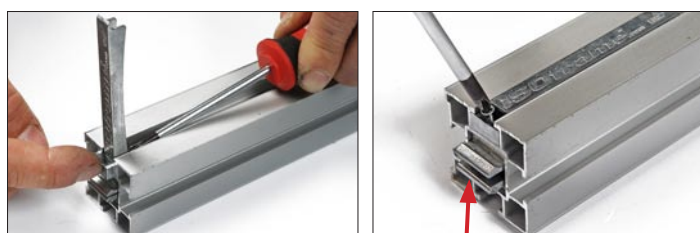
1. With the lever in the closed position, remove the small screw at the top of the lever. Push the lever and pivot out to the end of the bar. You may need to lift the lever slightly and tap with a hammer.



2. Remove the pin first, followed by the clamp. Replace the clamp, with the larger hole facing up.



3. Replace the pin. Mount the pivot and the lever.



4. Push the lever back into the channel and push down the pin and gently tap the pivot to put back into place. Replace the small screw with a new one. Press the Clamp upward when fastening the screw.

Extra stability

Method 1

Attach a 400 or 800 beam at the reverse of the post and the other side in a wall or some other stable surface. Use a Fast-clamp connector plate in the wall. See "Fast clamp connector plate".



Method 2

Attach two 400 or 800 beams on the reverse side of the system and on a base post.

A weight may be placed on this extension if the design of your display tends to lean forward, as with the addition of a door section.

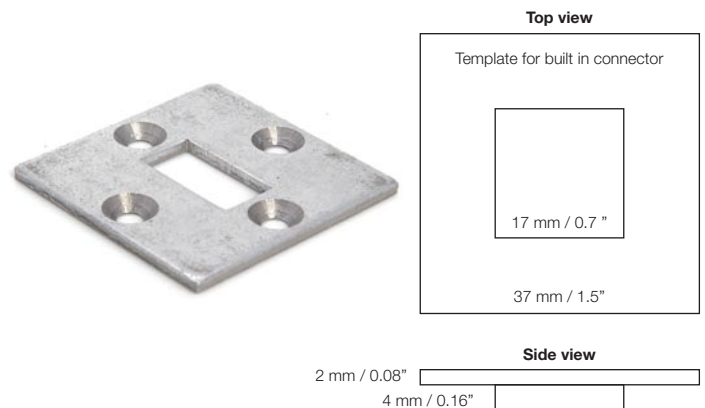


Fast clamp connector plate

To connect a "Fast clamp" in a shelf or wall.

Cut out from the shelves/wall (see template) and screw it on place.

Please observe, the screw must be in the level and not go over the edge on the plate!



Please note: This fast clamp connector plate can be purchased separately (see Component List) in case you want to produce locally your own table tops/shelving for the ISOframe counters and desks.