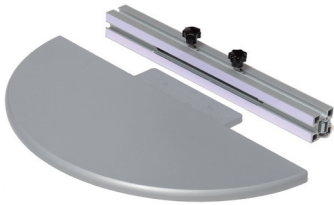


Floating shelf 400 mm

Item.no: IS-9616



Accessories



Deco light strip,
item IS-9385



Transformer,
item IS-9388



1 Attach the beam at the height that you want the shelf.



2 Mount the graphic panel and adjust the beam to match the slot that you have made in the panel.

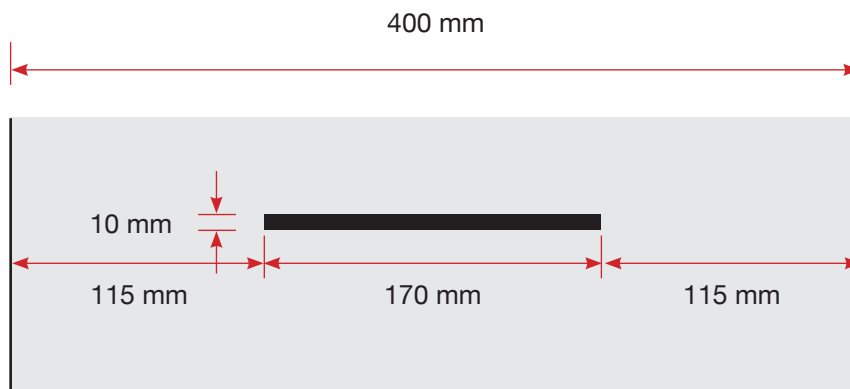


3 Push the shelf into the slot



4 Lock the shelf with the two screws at the reverse side.

Graphic production



1 Make a 170mm wide and 10mm high cut out in your graphic panel at the height that you want to place the shelf/shelves.